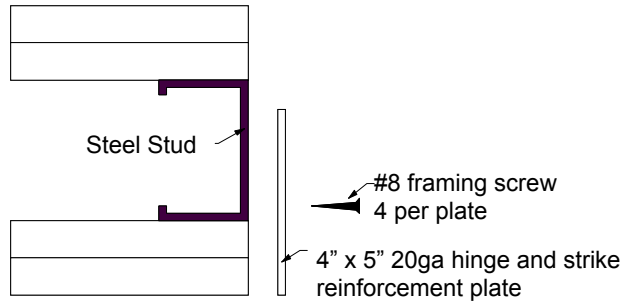
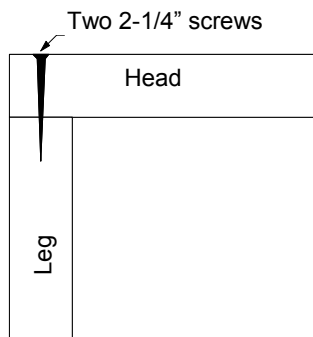


## 60/90-Minute Wood Frame Installation Instructions



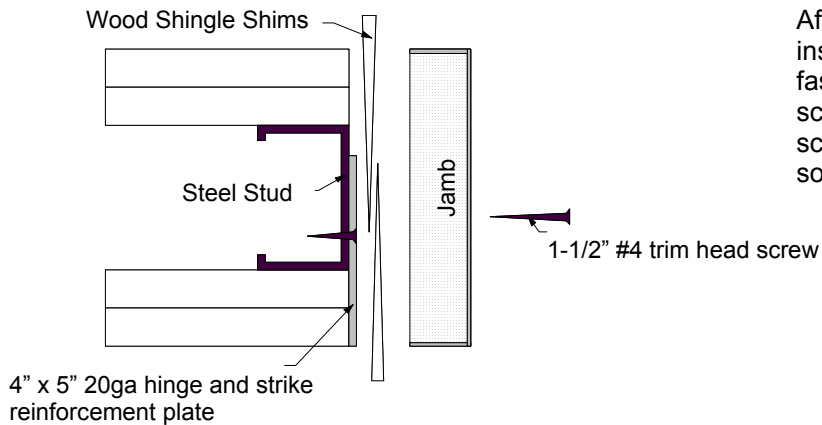
### Step #1

Fasten 20ga steel hinge and strike reinforcement plate to metal stud with #8 framing screw (4 per plate) at location of hinges and strike at corresponding wood jamb.



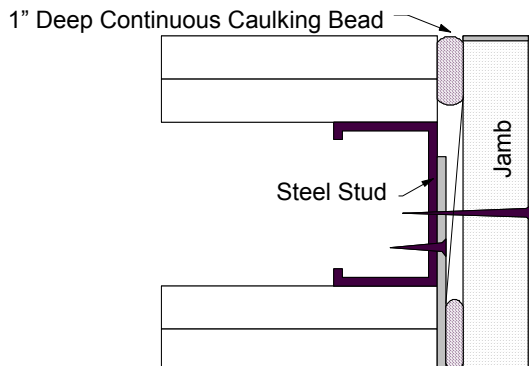
### Step #2

Pre-assemble frame by fastening head to legs using two each 2-1/4" screws in pre-drilled pilot holes. Insert assembled unit into rough opening.



### Step #3

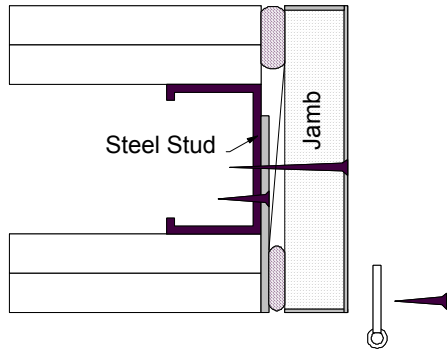
After using wood shingle shims to plumb inserted jamb assembly in rough opening fasten jamb to stud using 1-1/2" #4 trim head screws located 12" O.C.. Locate these screws behind where the stop will be placed so screws will be hidden.



### Step #4

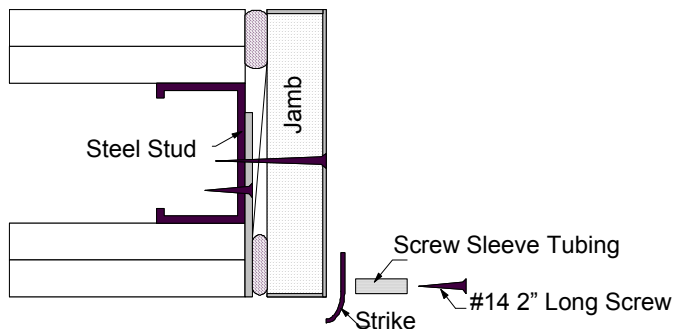
After jamb is set, run a continuous bead of latex caulking 1" deep between shims at perimeter of jamb on both sides.

## 60/90-Minute Wood Frame Installation Instructions (continued)



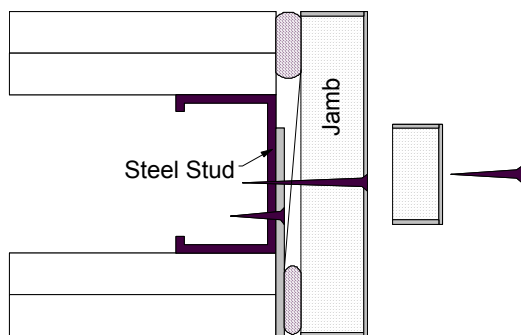
### Step #5

Pre-drill pilot holes and attach hinges to jamb substituting one each #14 2" long screw per hinge. This screw should go through frame and hinge reinforcement plate. Screw can be touch up painted to match hardware finish.



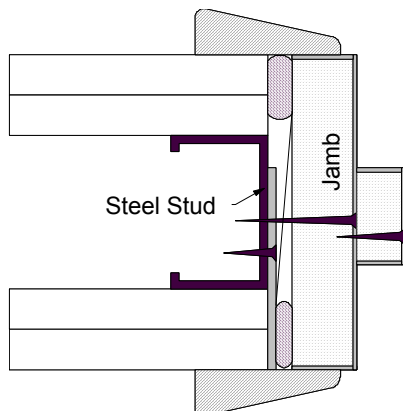
### Step #6

Cut two each pieces supplied screw sleeve tubing to longest possible length and insert into pre-drilled holes for mounting strike. Attach strike using #14 2" long screws. Screws can be touch up painted to match hardware finish.



### Step #7

After hanging door, position stop as desired and fasten with supplied 1-1/2" long spiral shank drive nails.



### Step #8

Attach casing with #6 finish nails 16" O.C. nailing both into the wall and the edge of the jamb.